

# ZYXEL

Your Networking Ally

# ZyXEL KIS

21/9/2016

Petr Dounáč

Regional Manger CEE, KA & SP

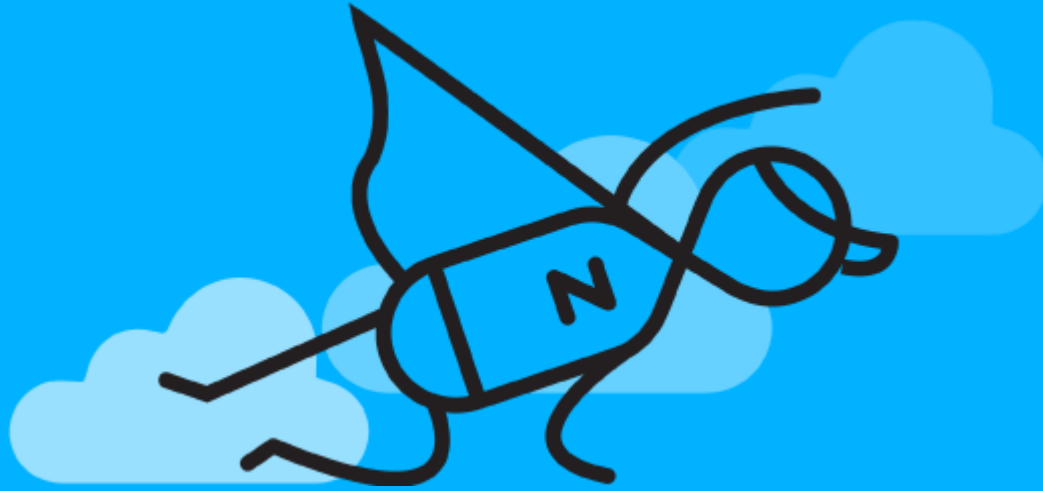


# Agenda

- About ZyXEL
- IQRF GW scope?
- The solution: KIS
- What's next?



# About ZyXEL



01

# ZYXEL

Your Networking Ally

30 

Nearly **30 years**  
of networking expertise

150 

**150 Global markets** served

For more information  
click here

1500+ 

**1500+ passionate associates**  
worldwide

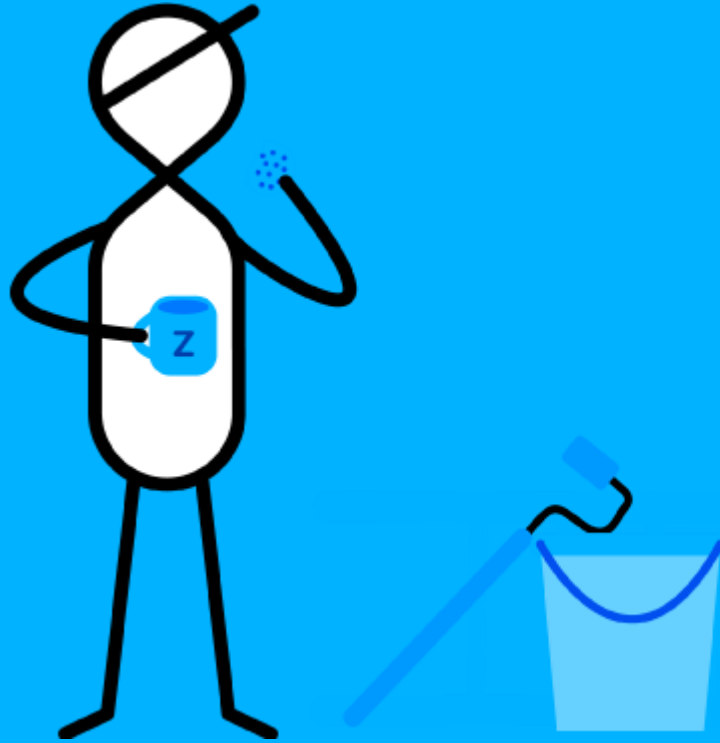
100 

**100 million devices**  
creating global connections

700,000 

**700,000 businesses**  
work smarter with Zyxel  
solutions

# IQRF GW Scope?



02

# The Scope

## Complexity of IQRF technology and it's potential creates wide scope(s) for different market segments

- **Hardware**
  - From single port router to multiWan multiaccess
  - Wide range of upper layer fw requirements
  - Different BB technologies needed in field
  - Each added component changes the development costs and complexity
- **The services**
  - Potential ranging from end-user-premises devices to central office equipment and industrial/outdoor applications

# What happens?

A monster is (may be) created

Wifi 2,4

Wifi 5

Gbit

FXS

BRI/PRI



DSL

IPseC

WAN

DLNA

LTE

IGMP

Fiber

TR-xxx

L2TP

GRE

- **The Gateway**

- Becomes extremely expensive OR
- Becomes a device with limited application scenarios OR
- Becomes a compromise

# The Solution: KIS

**KEEP IT SIMPLE**

03



# How do we achieve a KIS?

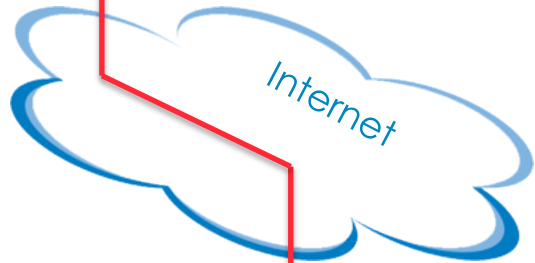
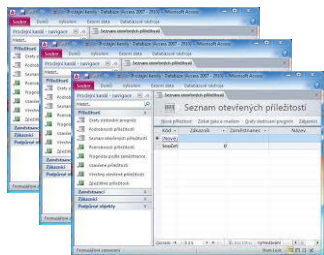
Instead of trying to cover all scenarios and technologies with one box, we take the box out of it and take care of two parts



- **Broadband connectivity**
  - Device is a Wifi client, thus no matter what BB technology or device we use (as long as WiFi AP is supported)
- **IQRF platform communication**
  - On-site via integrated IQRF chip (mesh)
  - Platform: via any BB connectivity

# Application diagram

**IQRF**  
Platform



Broadband connectivity (any)



# What's next?



# 04

# Action steps

1

## Finish basic IQRF Zoner

Gain implementation know-how both HW and SW part

We have a solution and implementation procedure

2

## Leverage know-how

Based on demand, develop more complex IQRF zoners (outdoor, LTE, GW, DSL, fiber etc.

We have solutions to cover more specific scenarios

3

## Build standardized product line

Having IQRF technology standardized whole new product line can evolve

We are covering most of markets and segments

# Action steps

1



- Basic IQRF Zoner
- Easy to install
- Minimal solution requirements

2



- Outdoor LTE Router
- Fixed BB router(s)
- Portable device(s)

3



- Per market demand any product group
- Any product with USB port (usage of IQRF dongle)

**ZYXEL**

**Thank You for Your attention**